

E-therapy, heat, suction, Bio-energy  
Bio-energy beauty equipment

# CELLVITA

## E-Manual

Pass Aside [➤](#)



# CELLVITA

## instruction manual

- Safety Precautions
- Product Components
- Connector Description
- Heat+Suction+E-Therapy Connection Terminal Description
- Screen Guide and Instructions for Use
- Description of energy mode and suction mode
- Usage Tips for Effective Management
- Consumer Protection Regulations
- Precautions in case of abnormal symptoms
- Product Warranty





# Safety Precautions



Precautions for safety are to protect the safety of users and damage to property due to accidents. and to prevent inconvenience. Please read it carefully and use it correctly.

※ In case of defects caused by the customer's direct installation, A/S costs may be incurred. Installation through the A/s center designated by the head office is recommended.

※ The contents of the user manual are not provided without prior notice to the user in order to improve the function of the product. It can be changed arbitrarily.

- The copyright of this manual belongs to Cellvita
- It is prohibited to reproduce part or all of the contents of this manual without the prior written consent of Cellvita, to store it in an information retrieval system, or to transmit it in any form or means, such as machine, copier, or disk copy.
- Cellvita is not responsible for any patent issues related to the use of the information contained in this manual.
- Nor shall we be liable for any damages resulting from the use of the information contained in this manual.
- Cellvita shall not be liable for any damages and losses, expenses or expenses incurred by the purchaser of this product or any third party due to the accident, misuse, abuse of this product, or unauthorized modification, repair, or modification of this product, or non-compliance with the operation and management guidelines of Cellvita. not.
- Cellvita is not responsible for any damages or problems caused by the use of options or consumables other than those designated as genuine or authorized products.
- Illustrations in this manual may differ from the actual product.
- Third-party product names used in this manual are for identification purposes only and may be trademarks of their respective owners.
- Cellvita does not have any rights to these trademarks.



※ Before using the product, please read the manual and how to use it.

- Do not place the product in direct sunlight or near fire or hot objects.
- Do not hang or climb on the installed product.
- Be careful as the tip temperature may rise and become hot when used for a long time.
- When not in use for a long time, turn off the power and remove the power plug before storing.
- Be careful not to tip over or fall other objects on the product.
- Do not install and use in a place with high humidity, such as a bathroom or a place exposed to moisture or splashing water.
- Do not place liquid containers such as cups or cosmetics on top of the product.
- Be careful not to let foreign substances such as water or coins enter the product.
- If a foreign object gets inside the product, immediately turn off the power and unplug the power supply.
- If the product emits a strange smoke or smell during use, immediately stop using it and After unplugging the power plug, contact the A/S center.
- Do not disassemble or modify the product arbitrarily, and in case of failure, Please contact the A/S center.
- Even during the free warranty period, if the product is disassembled arbitrarily, the warranty will be excluded.

Cellvita

# Product components

Cellvita Components

※ Check out the list below to see what's included. Missing or damaged Contact the place of purchase.

## 01 기기 본체



## 03 멀티 핸드피스(경혈도자·빗괄사)



## 04 핸드피스(대·중·소)



## 02 거치대

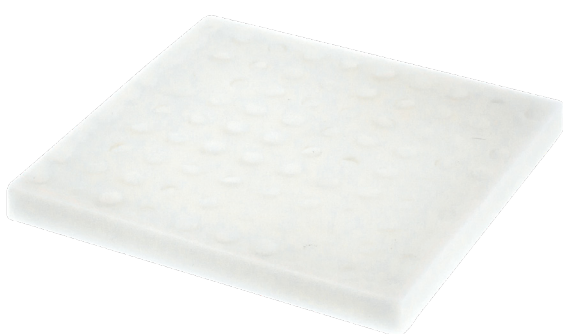


Cellvita

# Product components

Cellvita Components

**05** filter



**06** plate



**07** Heat + Suction  
+E-Therapy Connector



**08** power line



Cellvita

# Connector Description

Handpiece and connector



back of the device





Cellvita

# Connector Description

Handpiece and connector

※ After checking each handpiece and connecting terminals, connect them properly.



01

power line



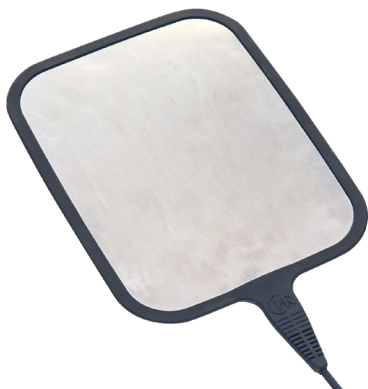
02

E-THERAPY Multi Handpiece  
(Acupuncture Point, Comb Handpiece)



03

HEAT+SUCTION+E-THERAPY Handpiece  
(Large, Medium, Small)



04

plat

Cellvita

# Heat + Suction + E-Therapy Connection Terminal Description

Connection and removal instructions

※ After checking each description, connect and disconnect appropriately.

## How to connect

When connecting the heat + suction + E-therapy connection line to the main body, please connect the black marks.



Cellvita

# Heat + Suction + E-Therapy Connection Terminal Description

Connection and removal instructions

## How to remove

When removing the heat + suction + E-therapy connection cord and handpiece Pull the connector down and remove it.





Cellvita

# Screen guide and instructions

Heat + Suction + E-Therapy Care System

※ Cellvita consists of two care systems: heat + suction + E-therapy and E-therapy.



Initial screen(Home mode screen)



HEAT+SUCTION+E-THERAPY screen

Cellvita

# Screen guide and instructions

Heat + Suction + E-Therapy Care System

## Initial screen(Home mode screen)



# 01

## Handpiece selection

Function you want to use HEAT+SUCTION+ E- THERAPY or Choose one of E-THERAPY

## Screen 1

### HEAT+SUCTION+E-THERAPY Screen



# 01

## Temperature, suction strength, usage time setting

control each with the touch of a button



UP



DOWN

# 02

## Energy level setting

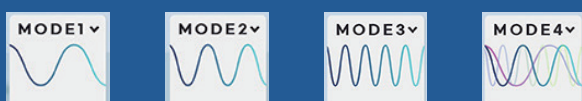
control each with the touch of a button



# 03

## Energy mode setting

Start after selecting the desired mode



## Suction mode setting

Start after selecting the desired suction mode



Cellvita

# Screen guide and instructions

Heat + Suction + E-Therapy Care System

## Screen 1

### E-THERAPY Screen



01

### Temperature and usage time setting

Control each with the touch of a button



UP



DOWN

02

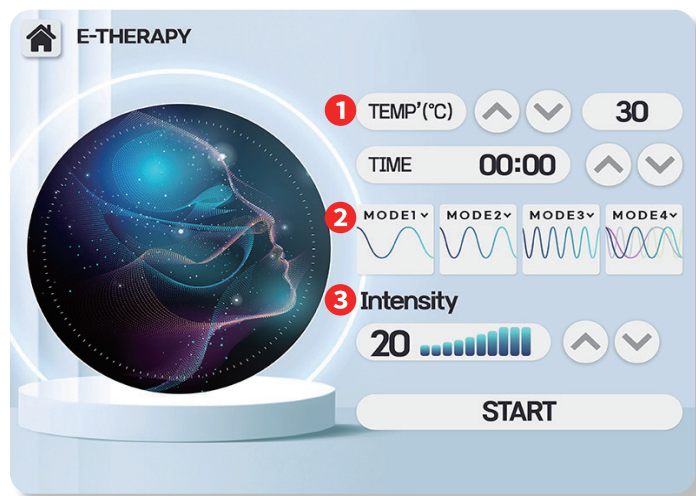
### Energy mode setting

Start after selecting the desired mode

03

### Energy level setting

Control each with the touch of a button



## Energy Mode, Suction Mode Description

### Energy mode setting



- MODE 1 : Relax (relieve tension gently massage)
- MODE 2 : Light (light lymph circulation massage)
- MODE 3 : Cycle (continuous in detail without omission)
- MODE 4 : Powerful (1·2·3 combined mode, strong management)

### Suction mode setting



- ①,② Suction mode : Pulse to gently release lymphatic circulation mode
- ③,④,⑤ Suction mode : Fascia Mode A pulse that holds the fascia layer strong and deeply.
- ⑥ : Suction continuous mode
- ⑦ : AUTO Suction mode : 1~6 mode random method





## Usage tips for effective management

Warm up before administration to relieve tight muscles or blood.  
Deep and gentle release to maximize after care



Appropriately adjust the handpiece and mode according to the customer



# 01

Energy(Mode 1)+Warm(45-50 degrees)  
10 to 15 minutes administration(using suction X)

# 02

In the case of intensive management focusing on energy  
No suction mode or low suction intensity(1 to 5)

# 03

When managing intensively with suction  
Use low energy level(1 to 5)

Cellvita

# Consumer Protection Regulations

## About the service

In accordance with the Consumer Damage Compensation Regulations for each item, our head office guarantees the products as follows. The installation of the product is requested by an installation expert, and A/S cannot be received if a failure occurs due to installation by a person other than an installation expert. In case of malfunction, please contact the service center.

## Free service (The product warranty period is 1 year.)

| Consumer Damage Type   | Rewards                      |                           |
|--|------------------------------|---------------------------|
|  | Within the war- ranty period | after the warranty period |
| In case of major abnormality within 10 days of purchase  | Product Exchange             |                           |
| In the event of a major abnormality in performance or function that occurs under normal use within 14 days of purchase | Product Exchange             |                           |

## Paid Service

### 1) If it is not a malfunction

- If it is not a malfunction, you will be charged a fee if you request service, so be sure to read the user manual. (If repair is not possible, it is limited to a separate standard)
- In case of reinstallation due to an installation problem rather than a malfunction of the product

### 2) In case of malfunction due to consumer negligence

- In case of malfunction due to negligence of consumer handling or reckless repair or remodeling
- In case of malfunction due to repair by a person other than the agent or A/S designated technician
- In case of malfunction due to incorrect use of electric capacity
- In case of malfunction or damage caused by dropping, etc. during movement after installation
- In case of a malfunction due to the use of consumables or options not specified by the head office

### 3) In other cases

- In case of malfunction due to natural disasters (lightning, ash, salt damage, water damage, etc.)
- When used in an unstable power source that cannot be protected by shock voltage

Cellvita

# Precautions For Abnormal Symptoms



caution

If there is an abnormality even after checking as follows, do not use it to prevent accidents. After stoppong and unplugging the power plug from the outlet, contact the customer service center. Personal repairs are dangerous, so never do it.

- Is the power plug properly plugged into the outlet?
- Is the handpiece installed correctly?
- Is the handpiece cable securely plugged into the body?

## Product Warranty

|                                    |                                |
|------------------------------------|--------------------------------|
| product name                       | C E L L V I T A    ( 셀 비 타 )   |
| Serial Number                      |                                |
| Date of purchase<br>(installation) | 2 0        년        월        일 |
| customer name                      |                                |
| telephone                          |                                |
| address                            |                                |

|                            |  |
|----------------------------|--|
| installation<br>point name |  |
| telephone                  |  |
| address                    |  |
| Installer name             |  |

- ※ Note: When requesting repairs, you must present this warranty with the date of purchase to receive sufficient service. Please keep it well.
- 1) The free warranty period is calculated from the date of purchase, so please fill out the warranty for this product.
- 2) If the date of purchase cannot be confirmed, the warranty period is calculated from the date 30 days have elapsed from the date of manufacture of this product.

The warranty is valid only within the Republic of Korea.  
We are not responsible for accidents caused by the user's ignorance of precautions





# CE@VITA

## WELLNESS

28794 Wolpyeong-ro, Seowon-gu, Cheongju-si,  
Chungcheongbuk-do 78 4F T. +82 - 5798 - 7586

